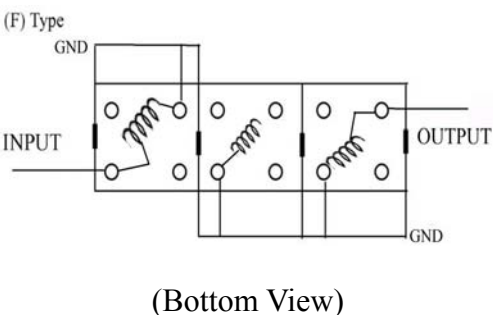
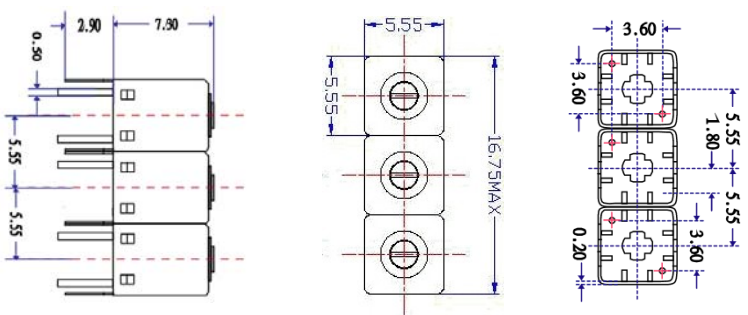


VHF UHF Helical Filter Specification Sheet

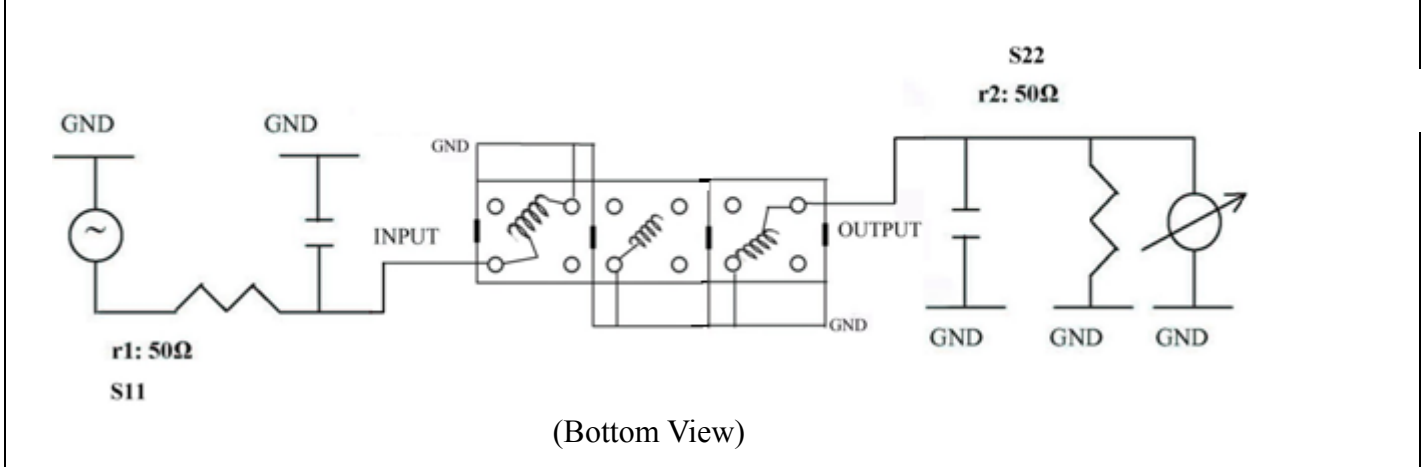
Customer Name		Temwell's Part No.	TTR3682F-675M
Approval No. /dated	201505093CD	Temwell's Print Name	3682F 675M
Work Instruction No.	201505093CD	Date	Oct.26.2015

<p>(1) Pin Position</p>  <p style="text-align: center;">(Bottom View)</p>	<p>(2) Size Diagram</p> 
--	--

(3) Electric Characteristic			
Item	Specify	Performance	
Center Freq.(Fo) +/- 0.5 %	675 MHz	675	MHz
Insertion Loss	Typ. 5.0 dB	3.47	dB
-3 dB Bandwidth	Typ. 15 MHz	19.6	MHz
Sensitivity (Attenuation)	Fo - 50 MHz	Typ. 32	dBc
	Fo + 50 MHz	Typ. 33	dBc
	Fo - ()MHz	Typ.	dBc
	Fo + ()MHz	Typ.	dBc
Return Loss	Min. 12 dB	20.0	dB
Ripple	< 1 dB		dB
Impedance	In / Out : 50 Ω	In / Out : 50 Ω	

(4) Torque for Tuning Screw	> 60gf · cm
(5) Temperature Condition:	
Operating Temperature	0°C ~ +60°C
Storage Temperature	-20°C ~ +70°C
(6) Input Power	> 0.5Watt

(7) Measuring Circuit: ※Easy to match Impedance S11/S22 50Ω/ by parallel with about(- -).



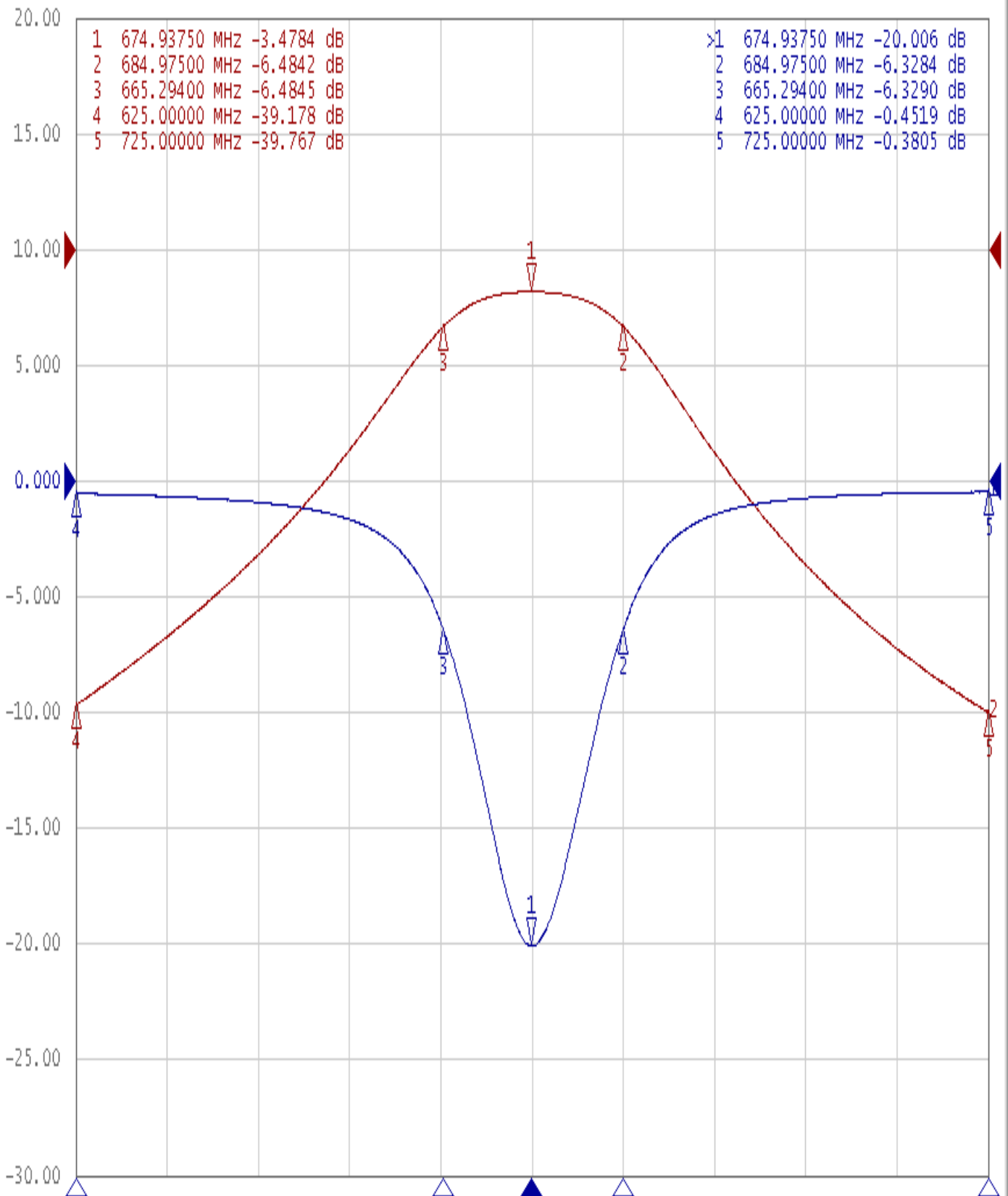
Approval	Supervisor	Designer	Aperture size
C.Y.Chang	C.K.Chang	C.S.Chang	5R3S(3.8*3.65)(4.65) 5H024RB3

TEMWELL CORPORATION

Performance-TTR3682F-675M

201505093CD

Tr1 511 Log Mag 5.000dB/ Ref 0.000dB [F2]
Tr2 521 Log Mag 10.00dB/ Ref 0.000dB [F2]



1 Center 675 MHz

IFBW 10 kHz

Span 100 MHz Cor !