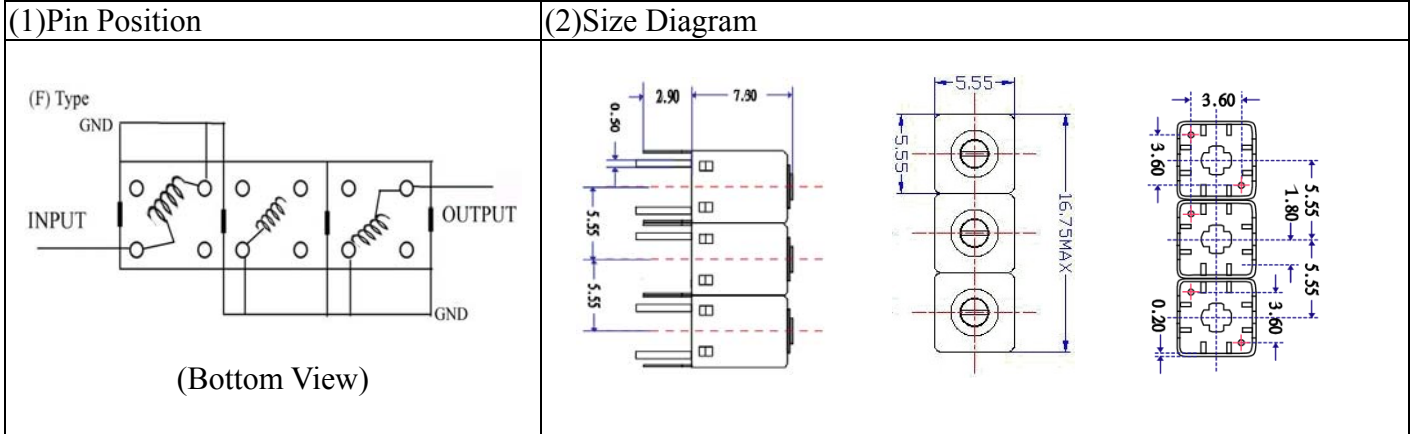


# VHF UHF Helical Filter Specification Sheet

Customer Name		Temwell's Part No.	TTR3672F-612M
Approval No. /dated	201505089CD	Temwell's Print Name	3672F 612M
Work Instruction No.	201505089CD	Date	Oct.01.2015



(3) Electric Characteristic

Item	Specify	Performance	
Center Freq.(Fo) +/- 0.5 %	612 MHz	612 MHz	
Insertion Loss	Typ. 5.5 dB	4.49 dB	
-3 dB Bandwidth	Typ. 11 MHz	15.0 MHz	
Sensitivity (Attenuation)	Fo - 50 MHz	Typ. 39 dBc	42 dBc
	Fo + 50 MHz	Typ. 39 dBc	42 dBc
	Fo - ( )MHz	Typ. dBc	dBc
	Fo +( )MHz	Typ. dBc	dBc
Return Loss	Min. 12 dB	31.3 dB	
Ripple	< 1 dB	dB	
Impedance	In / Out : 50 Ω	In / Out : 50 Ω	

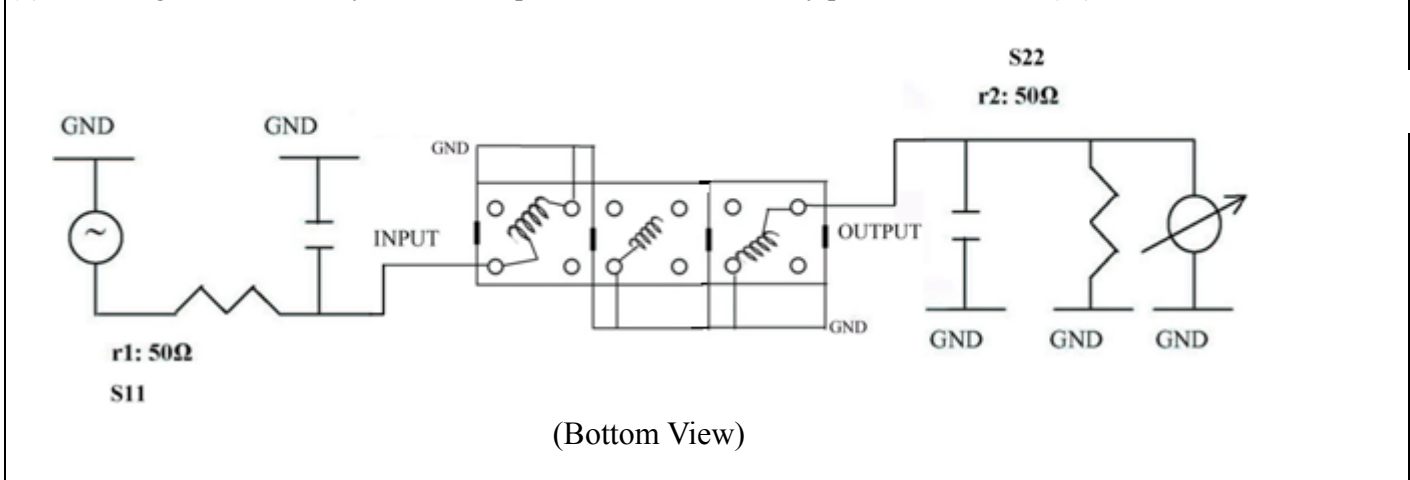
(4) Torque for Tuning Screw > 60gf • cm

(5) Temperature Condition:

Operating Temperature	0°C ~ +60°C
Storage Temperature	-20°C ~ +70°C

(6) Input Power > 0.5Watt

(7) Measuring Circuit: ※Easy to match Impedance S11/S22 50Ω/ by parallel with about(- -).



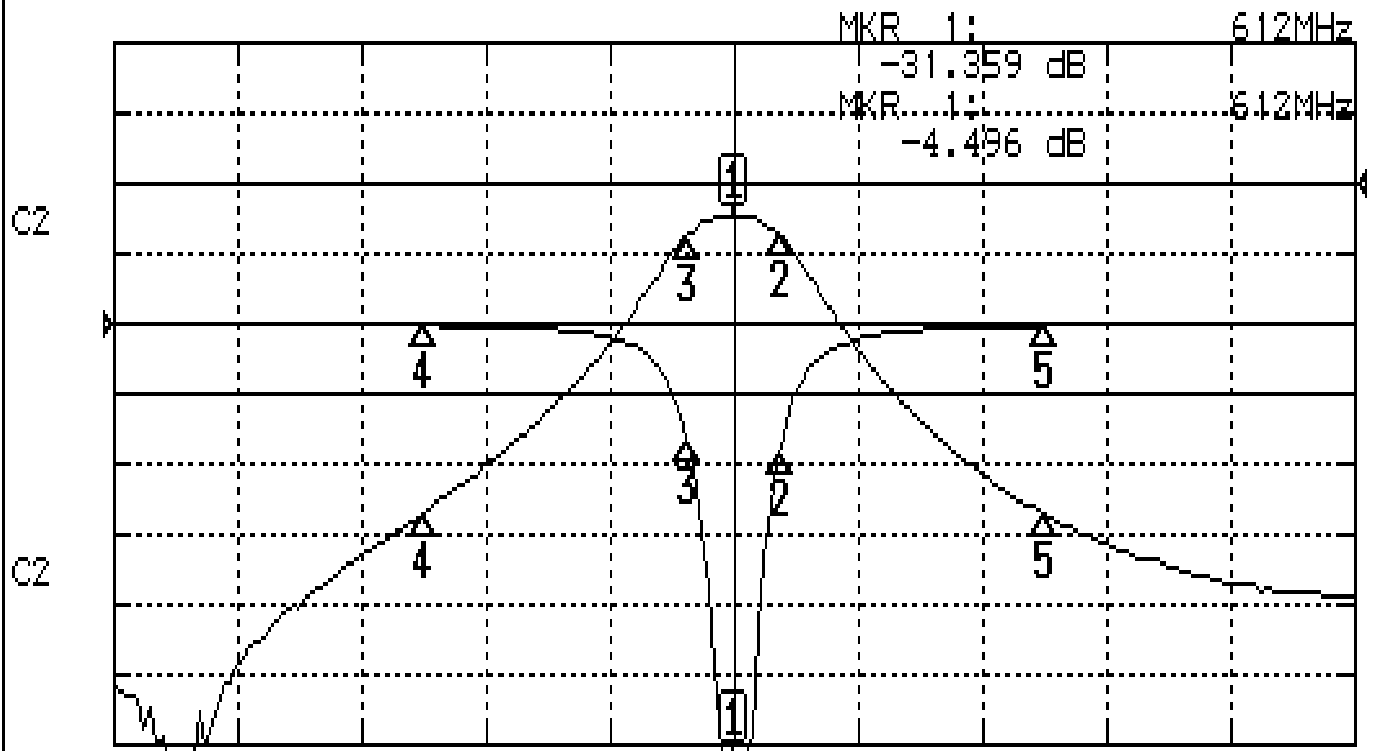
Approval	Supervisor	Designer	Aperture size
C.Y.Chang	C.K.Chang	C.H.Yeh	5R3S(3.8*3.65)(4.69) 5H024RB3

TEMWELL CORPORATION

# Performance-TTR3672F-612M

## 201505089CD

CH1 S11 LOG MAG REF 0.000 dB 5.000 dB/  
CH2 S21 LOG MAG REF 0.000 dB 10.000 dB/



CENTER 612MHz

[ 10.00 dBm ]

SPAN 200MHz

### CH1 MARKER LIST

1:	612.000MHz	-31.359	dB
2:	619.500MHz	-9.017	dB
3:	604.500MHz	-8.243	dB
4:	562.000MHz	-0.128	dB
5:	662.000MHz	-0.144	dB
6:			
7:			
8:			
9:			
10:			

### CH2 MARKER LIST

1:	612.000MHz	-4.495	dB
2:	619.500MHz	-7.427	dB
3:	604.500MHz	-7.414	dB
4:	562.000MHz	-46.872	dB
5:	662.000MHz	-47.203	dB
6:			
7:			
8:			
9:			
10:			