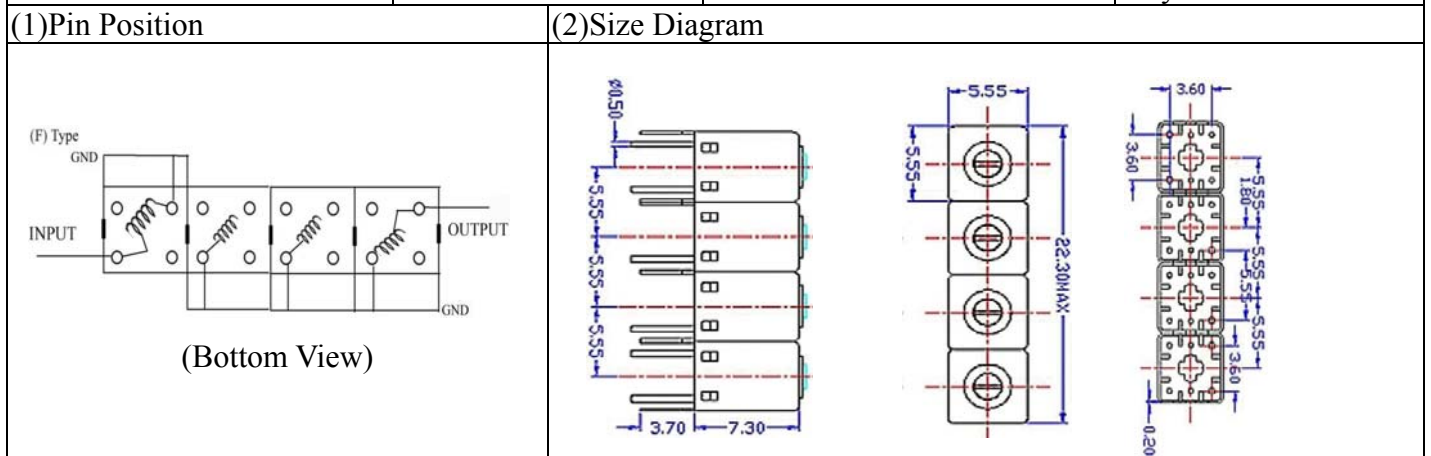


VHF UHF Helical Filter Specification Sheet

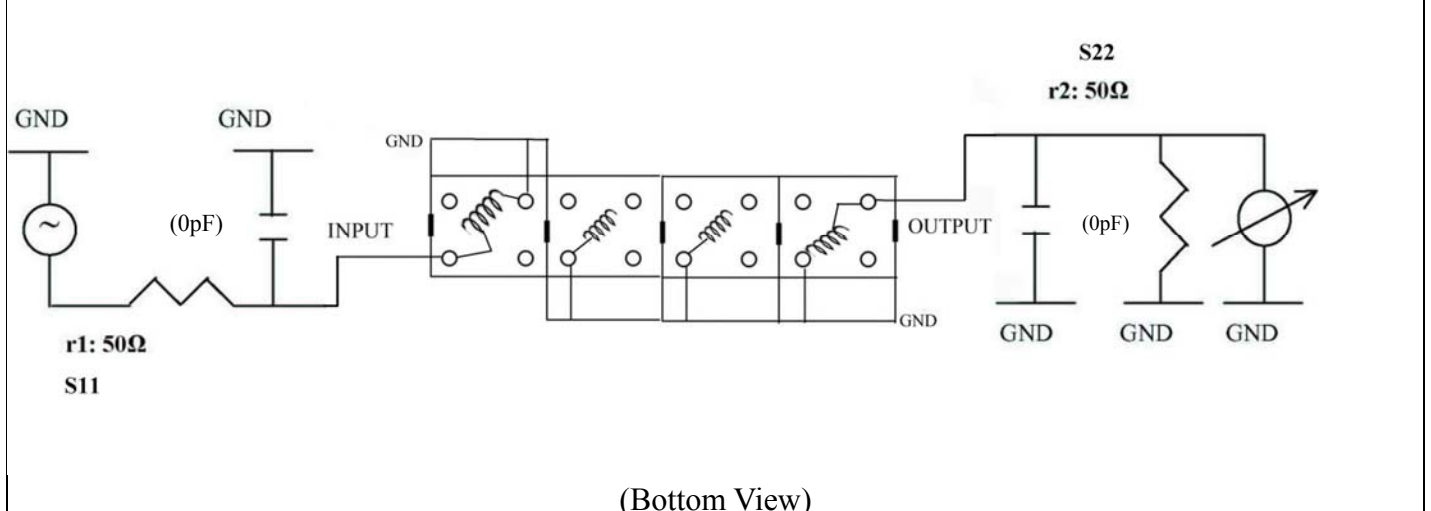
Customer Name		Temwell's Part No.	K4RF-515M-20M
Approval No. /dated	0904186CD	Temwell's Print Name.	K4RF 515M
Work Instruction No.	200904186CD	Date	May.19.2009



(3) Electric Chararistic			
Item		Specify	Performance
Center Freq.(Fo) +/- 0.5 %		515 MHz	515 MHz
Insertion Loss		Typ. 4.0 dB	3.20 dB
-3 dB Bandwidth		Typ. 20 MHz	23.2 MHz
Sensitivity (Attenuation)	Fo - 50 MHz	Typ. 36 dBc	54 dBc
	Fo + 50 MHz	Typ. 25 dBc	47 dBc
	Fo - ()MHz	Typ. dBc	dBc
	Fo +()MHz	Typ. dBc	dBc
Return Loss		Min. 12 dB	19.9 dB
Ripple		< 1 dB	dB
Impedance		In / Out : 50 Ω	In / Out : 50 Ω
(4) Torque for Tuning Screw		> 60gf · cm	

(5) Temperature Condition:	
Operating Temperature	0°C ~ +60°C
Storage Temperature	-20°C ~ +70°C
(6) Input Power	> 0.5Watt

(7) Measuring Circuit: ※Easy to match Impedance S11/S22 50Ω by parallel with about(0pF) / (0pF).

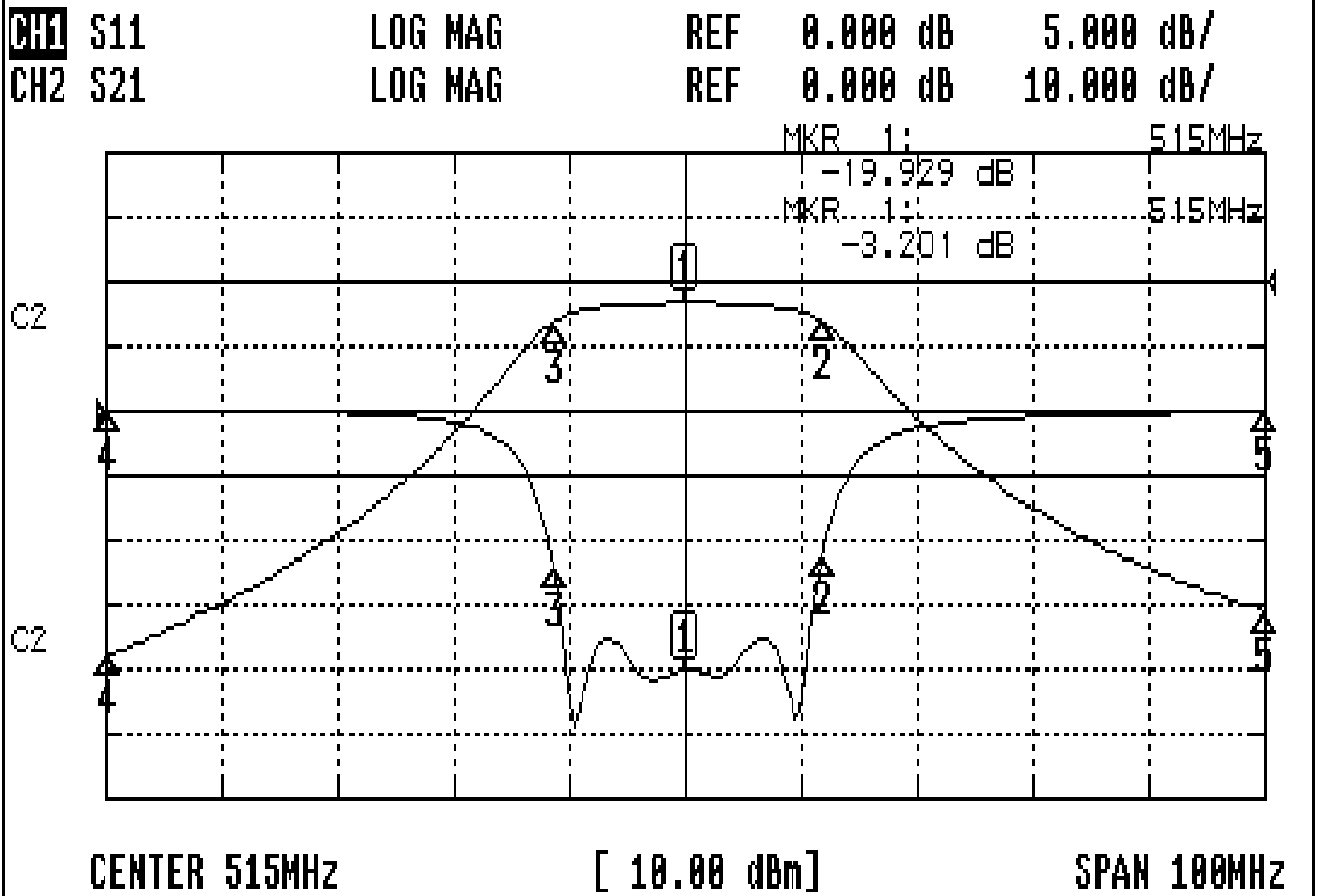


Approval C.Y.Chang	Supervisor C.K.Chang	Designer Y.H.Yeh	Aperture size 5R4S(3.8*4.2)(4.23) 5HW024RB3
-----------------------	-------------------------	---------------------	---

TEMWELL CORPORATION

Performance-K4RF-515M-20M

200904186CD



CH1 MARKER LIST

1:	515.000MHz	-19.929	dB
2:	526.880MHz	-11.227	dB
3:	503.640MHz	-12.031	dB
4:	465.000MHz	0.062	dB
5:	565.000MHz	-0.061	dB
6:			
7:			
8:			
9:			
10:			

CH2 MARKER LIST

1:	515.000MHz	-3.201	dB
2:	526.880MHz	-6.202	dB
3:	503.640MHz	-6.204	dB
4:	465.000MHz	-7.626	dB
5:	565.000MHz	-50.884	dB
6:			
7:			
8:			
9:			
10:			