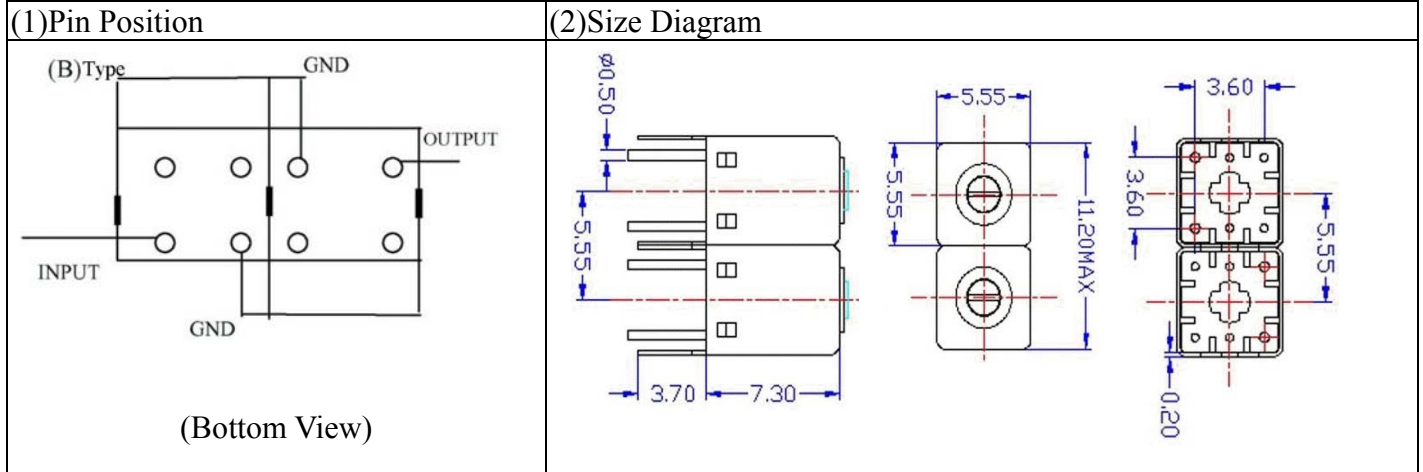


VHF UHF Helical Filter Specification Sheet

Customer Name		Temwell's Part No.	K2RB-340M-10M
Approval No. /dated	0908114CD	Temwell,s print name.	K2RB 340M
Work Instruction No.	200908114CD	Date	Sep.03.2009



(3)Electric Chararistic

Item	Specify	Performance
Center Freq.(Fo) +/- 0.5 %	340 MHz	340 MHz
Insertion Loss	Typ. 3.0 dB	1.80 dB
-3 dB Bandwidth	Typ. 10 MHz	17.8 MHz
Sensitivity (Attenuation)	Fo - 50 MHz	Typ. 25 dBc
	Fo + 50 MHz	Typ. 25 dBc
	Fo - ()MHz	Typ. dBc
	Fo +()MHz	Typ. dBc
Return Loss	Min. 12 dB	32.2 dB
Ripple	< 1 dB	dB
Impedance	In / Out : 50 Ω	In / Out : 50 Ω

(4)Torque for Tuning Screw

	> 60gf • cm
--	-------------

(5)Temperature Condition:

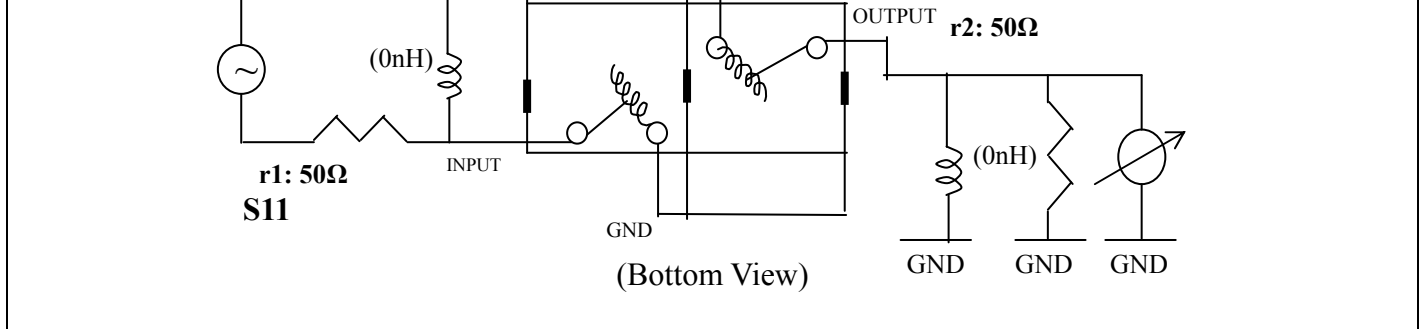
Operating Temperature	0°C ~ +60°C
-----------------------	-------------

Storage Temperature	20°C ~ +70°C
---------------------	--------------

(6)Input Power

	> 0.5Watt
--	-----------

(7)Measuring Circuit: ※Easy to match Impedance S11/S22 50Ω/ by parallel with about (0) nH.



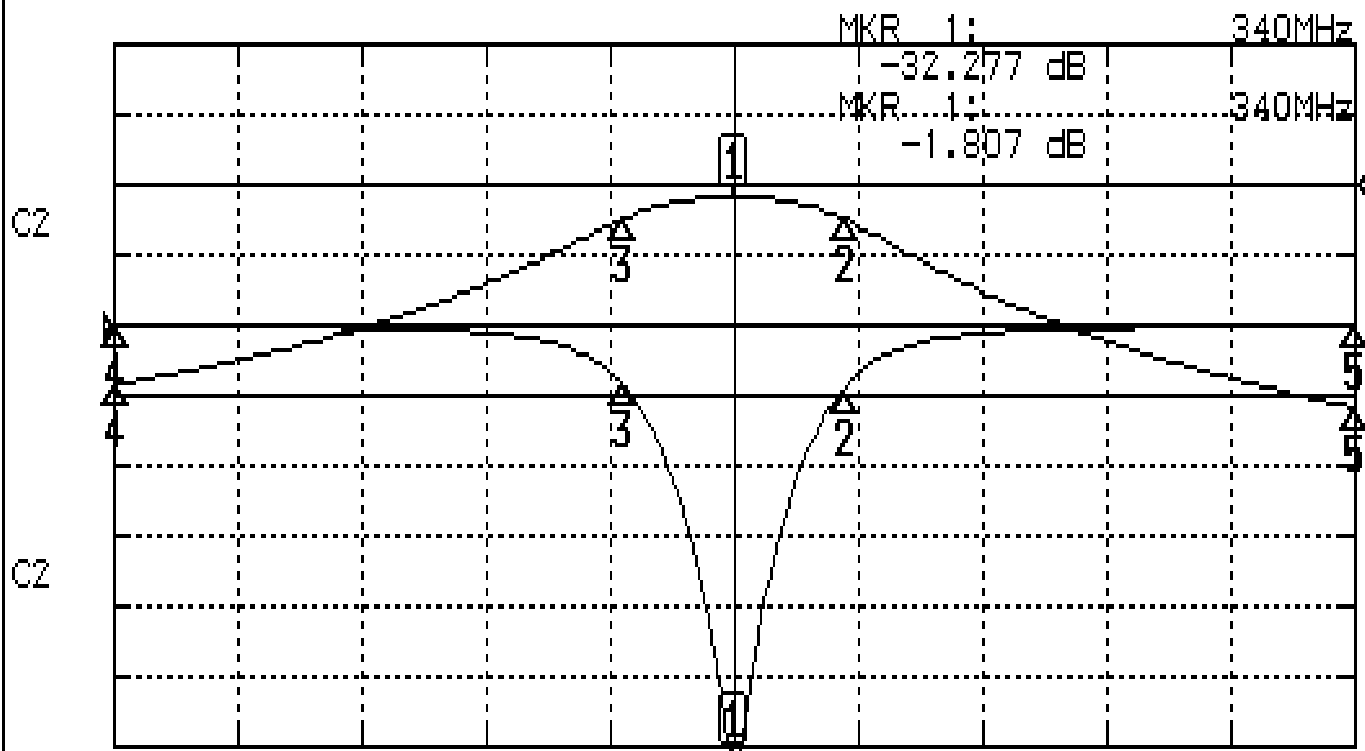
Approval C.Y.Chang	Supervisor C.K.Chang	Designer C.H.Yeh	Aperture size 5R2S(3.8*3.7)(3.70) 5HW020RB3.5
-----------------------	-------------------------	---------------------	---

TEMWELL CORPORATION

Performance-K2RB-340M-10M

200908114CD

CH1 S11 LOG MAG REF 0.000 dB 5.000 dB/
CH2 S21 LOG MAG REF 0.000 dB 10.000 dB/



CENTER 340MHz

[10.00 dBm]

SPAN 100MHz

CH1 MARKER LIST

1:	340.000MHz	-32.273 dB
2:	348.833MHz	-4.508 dB
3:	331.000MHz	-4.151 dB
4:	290.000MHz	-0.062 dB
5:	390.000MHz	-0.004 dB
6:		
7:		
8:		
9:		
10:		

CH2 MARKER LIST

1:	340.000MHz	-1.807 dB
2:	348.833MHz	-4.848 dB
3:	331.000MHz	-4.824 dB
4:	290.000MHz	-28.477 dB
5:	390.000MHz	-31.745 dB
6:		
7:		
8:		
9:		
10:		