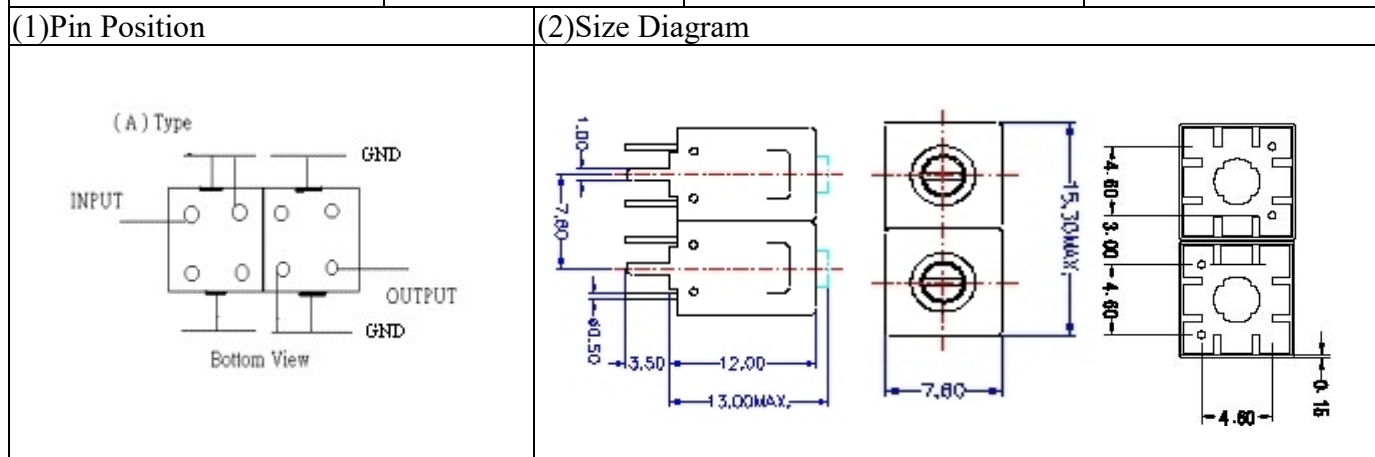


VHF UHF Helical Filter Specification Sheet

Customer Name		Temwell's Part No.	TD6711A1-415M
Approval No. /dated		Temwell's Print Name	6711A1 415M
Work Instruction No.	201203002A	Date	Mar.28.202



(3) Electric Characteristic

Item	Specify	
Center Freq.(Fo) +/- 0.75 %	415	MHz
Insertion Loss	Typ 3.0	dB
-3 dB Bandwidth	Typ. 9	MHz
Sensitivity (Attenuation)	Fo - 50 MHz	Typ. 50 dBc
	Fo + 50 MHz	Typ. 30 dBc
	Fo - ()MHz	Typ. dBc
	Fo +()MHz	Typ. dBc
Return Loss	Min. 12	dB
Ripple	< 1	dB
Impedance	In / Out : 50 Ω	

(4) Torque for Tuning Screw > 100gf · cm

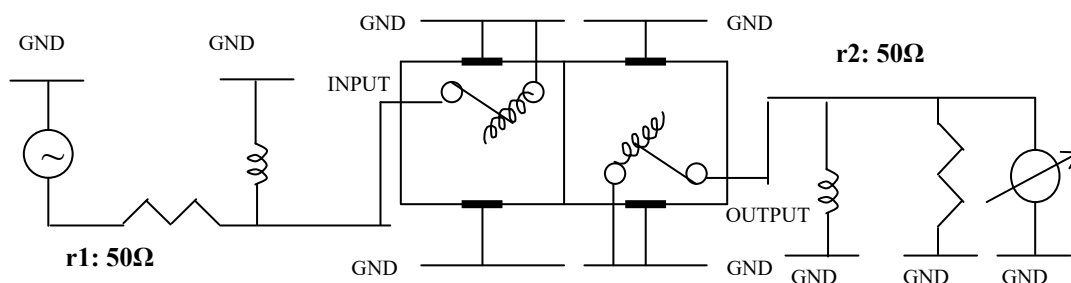
(5) Temperature Condition:

Operating Temperature	-30°C ~ +60°C
Storage Temperature	-30°C ~ +70°C

(6) Input Power > 1Watt

(7) Measuring Circuit: ※Easy to match Impedance 50Ω by parallel with about (--).

S22



S11

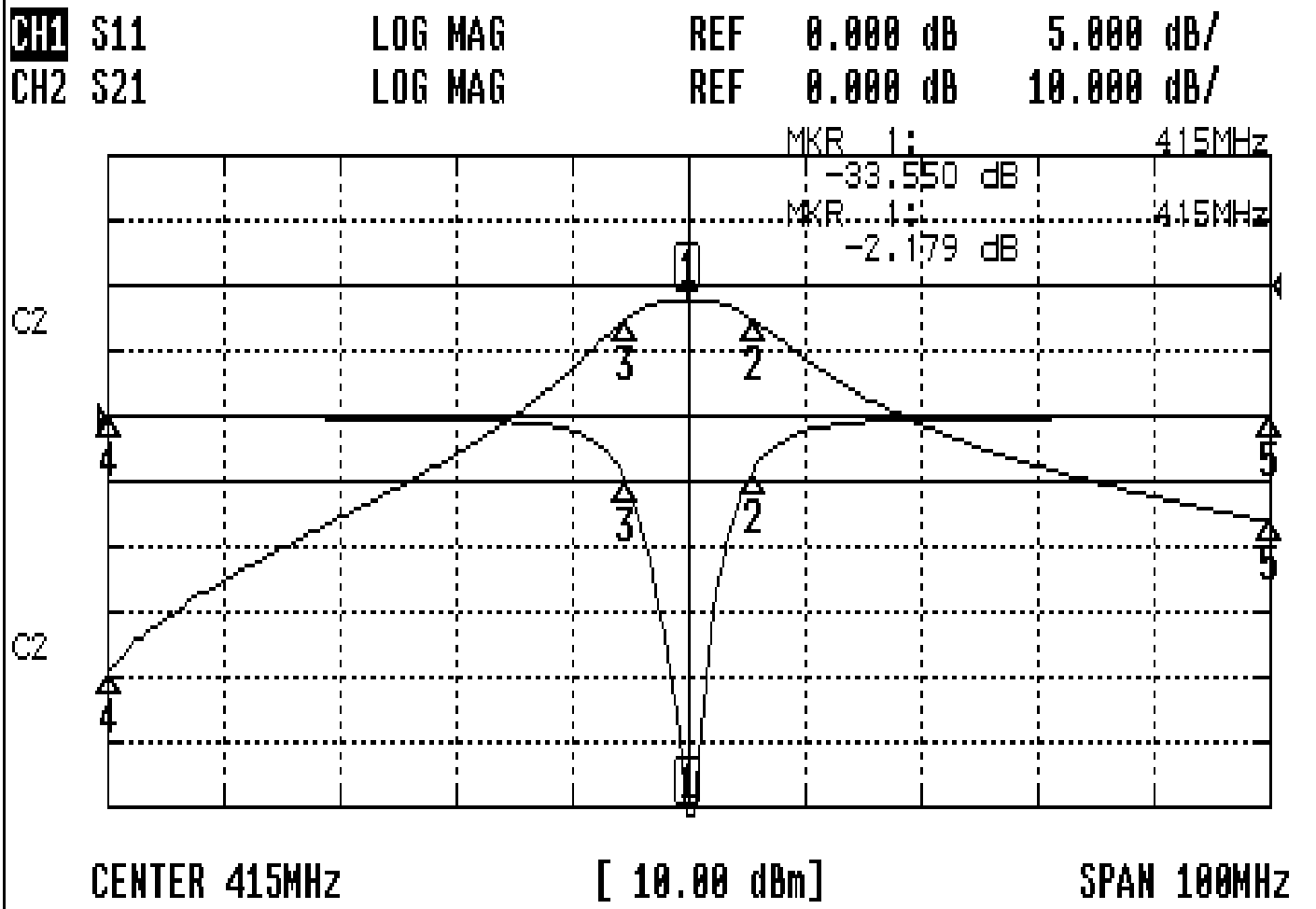
(Bottom View)

Approval	Supervisor	Designer	Aperture size
C.Y.Chang	C.K.Chang	M.Y.Kang	7H2S(4*5.5)(5.59) 7H046LB4.3 聚 3 , J1

TEMWELL CORPORATION

Performance-TD6711A1-415M

201203002A



CH1 MARKER LIST

1::	415.000MHz	-33.550	dB
2::	420.583MHz	-14.245	dB
3::	409.666MHz	-15.076	dB
4::	365.000MHz	-0.125	dB
5::	465.000MHz	-0.105	dB

CH2 MARKER LIST

1::	415.000MHz	-2.178	dB
2::	420.583MHz	-14.168	dB
3::	409.666MHz	-15.100	dB
4::	365.000MHz	-18.761	dB
5::	465.000MHz	-36.128	dB